



Whittier Townhomes

Modern amenities and incredible views in the historic Kendall Whittier neighborhood.



Green Country Habitat for Humanity and Boomtown Development are excited to announce the completion of Phase I at the Whittier Townhome Development. Construction on Phase II is currently underway. In total, this project offers 23 three-bedroom, two-bath homes for both GCHFH and Boomtown clients.

Whittier Townhomes is located in the heart of Kendall Whittier, a community designated one of seven Oklahoma Certified Cultural Districts by the Oklahoma Arts Council.

This Cynergy-designed complex offers incredible views of downtown Tulsa, close access to schools and highways, easy walking distance to historic Kendall Whittier Main Street, and a vibrant local community of small businesses, restaurants, and entertainment.

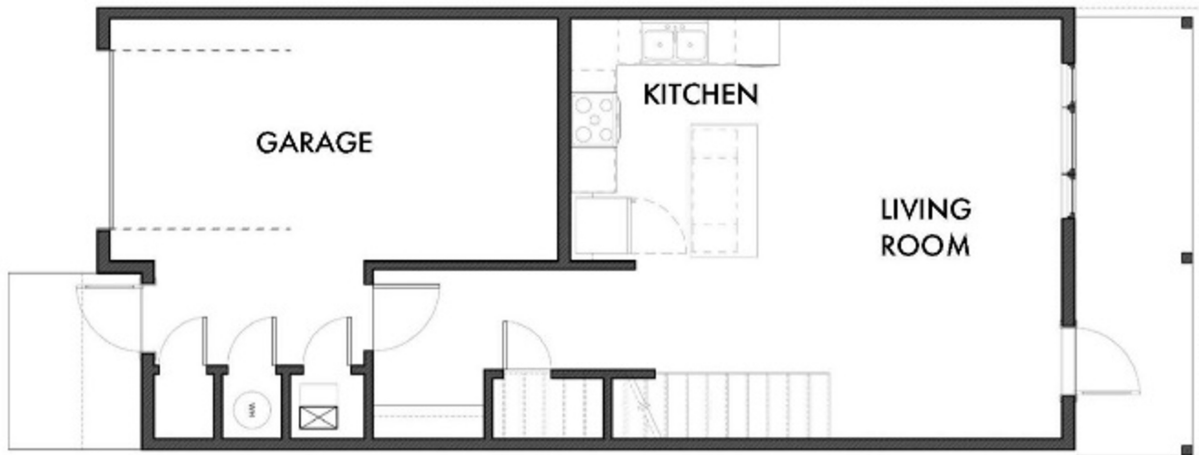
Built on the former site of Whittier Elementary School, Whittier Townhomes is transforming an entire city block and represents the largest residential project in this area north of I-244 in many decades.

For more information, contact:

Karyn Weitzl, Green Country Habitat for Humanity
kweitzl@greencountryhabitat.org
918-556-4604



Whittier Townhomes Floorplan



Level 2



Home Features

- 23 units at approx. 1300 sq. ft.
- All units are 3-bedroom, 2-bath
- Primary suite with walk-in closet & full bath
- Kitchen island and pantry
- Indoor laundry and mudroom
- Covered porch
- 1-car garage with ample storage
- Homeowner's Association
- Energy Star-rated construction
- Professional landscaping and sidewalks
- Starting at \$215,000